



Goshen Avenue and Demaree Street Improvement Project Public Outreach Meeting

Project Introduction

- Introductions of Project Team
- Interpreter is available

The City of Visalia is greatly looking forward to enhancing traffic circulation in northwest Visalia through significant improvements to the Goshen and Demaree Intersection including the following:

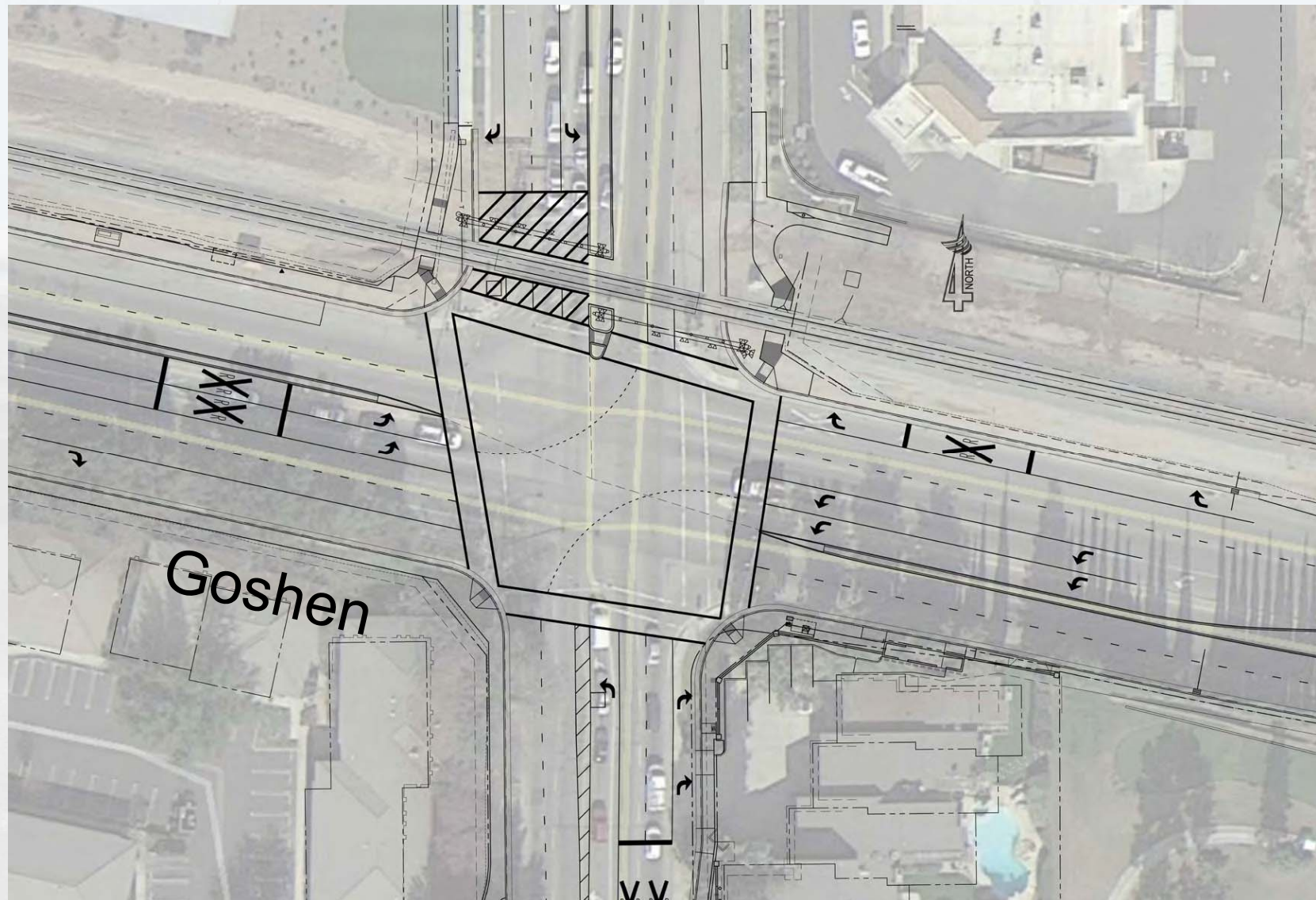
- Addition of Dedicated Right turn pockets on Demaree
- Widening of the existing Railroad crossing
- Providing 3 northbound receiving traffic lanes on Demaree north of the Railroad
- Addition of Double Left turn pockets on Goshen

The City continues to plan for the future by installing Traffic Signal Interconnect Conduit for future traffic signal connectivity.



Completed Intersection

Demaree



General Comments

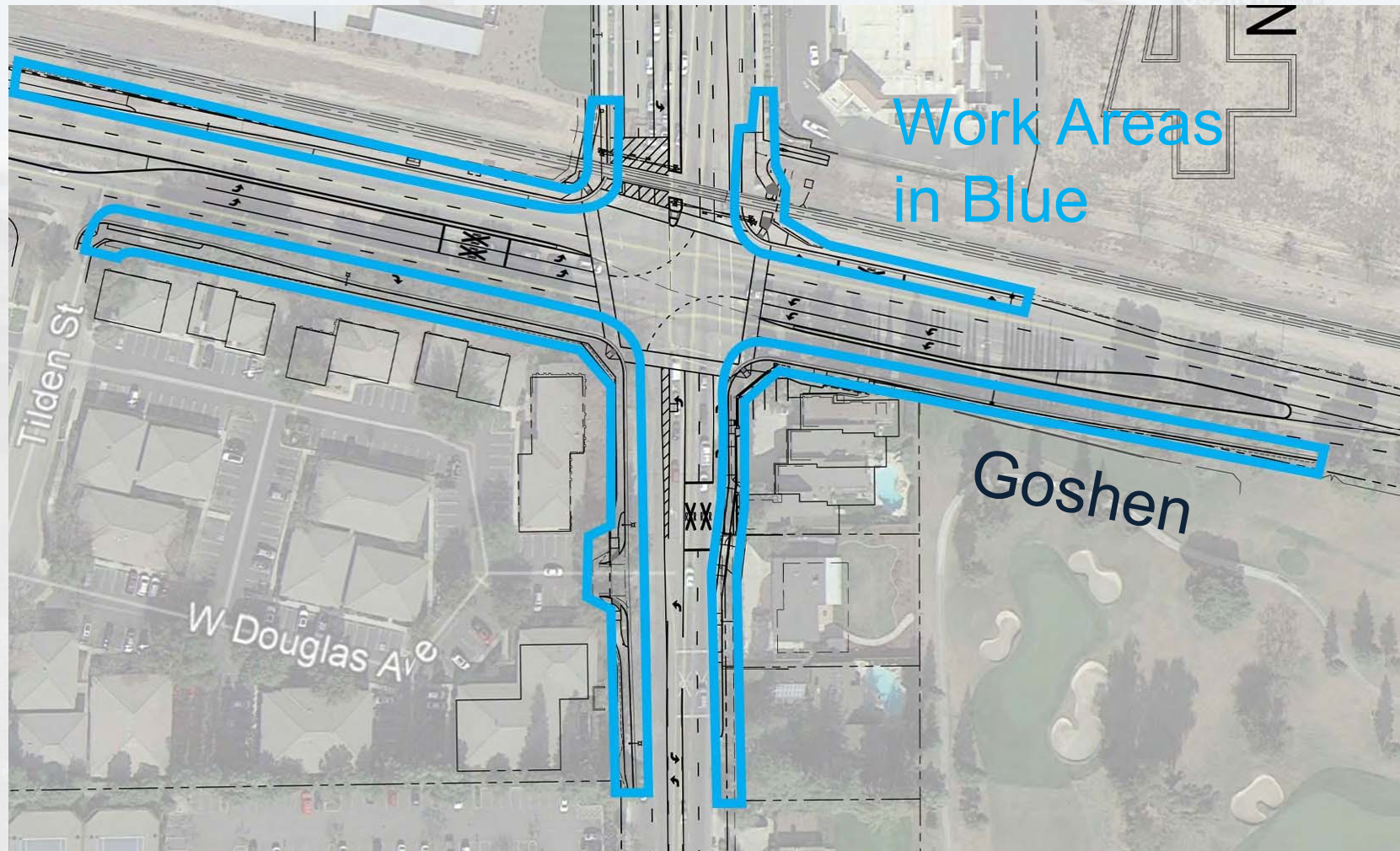
- All dates shown are Tentative.
- Work hours shown are allowable hours when traffic is impacted.
- Phasing, schedule, and traffic control may be modified pending project requirements/conditions and unforeseen situations.
- Coordination is being performed with City Services, Visalia Unified School District, and others.
- Portable Changeable Message Boards will be provided at the project site.
- Access provided to adjacent properties.



Phase 1 – Shoulder & Utility Work: Lane Closures

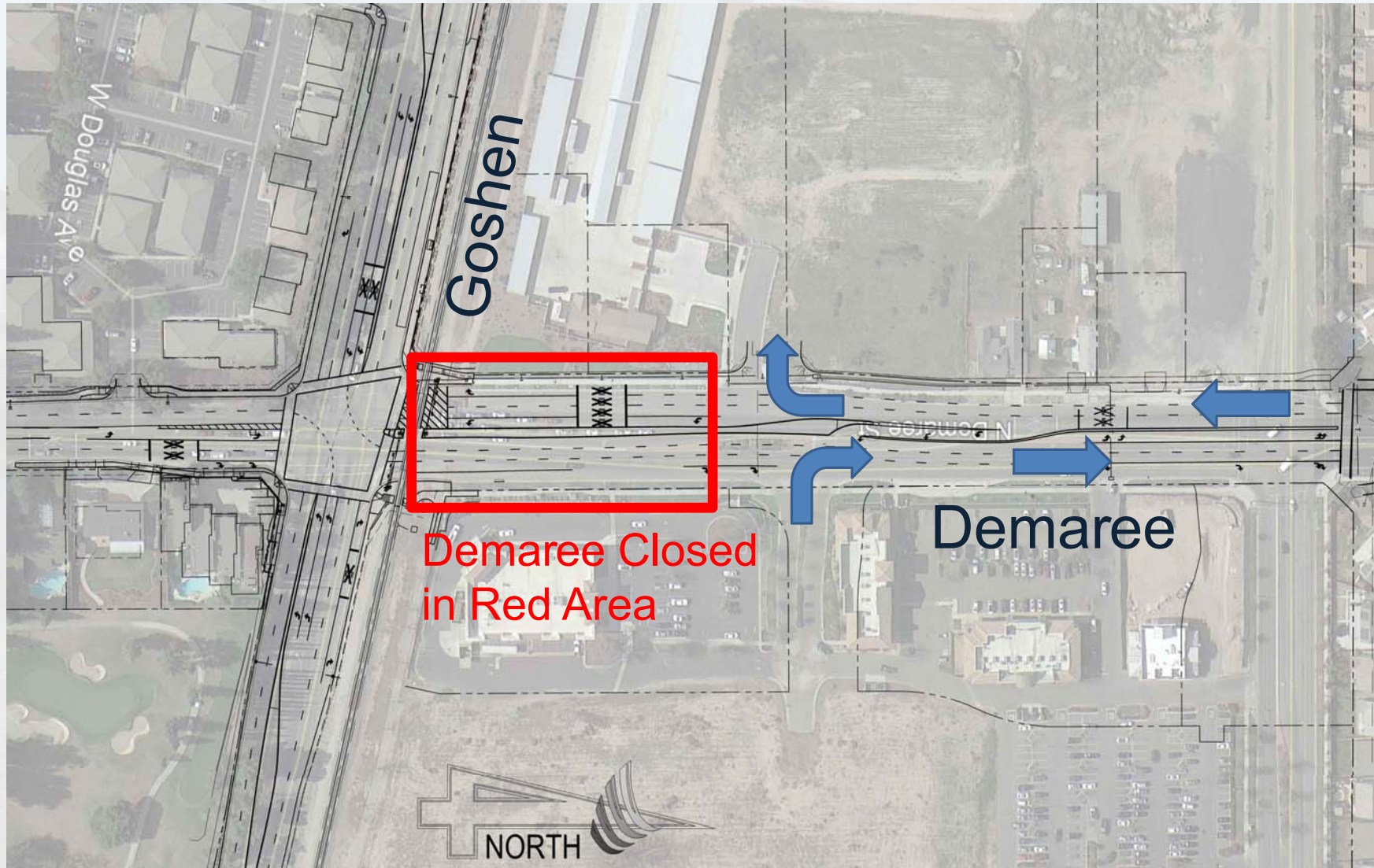
Work Hours: M-F 8:30am-4pm, July 9-Mid October

Demaree



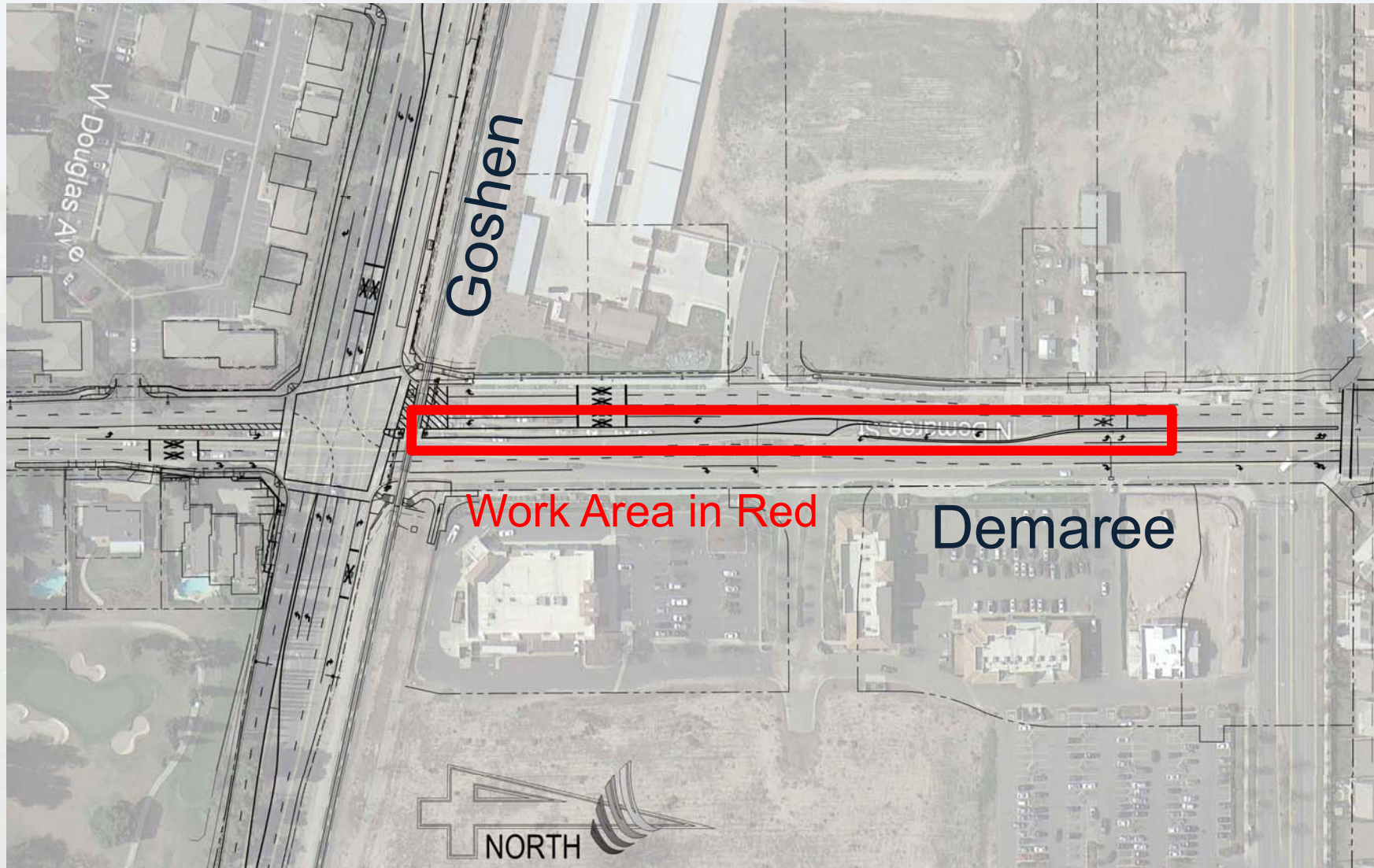
Phase 2 – Railroad Crossing: Demaree Closed, Weekend Closure

Work Hours: Friday 7pm-Monday 10am, Mid-Late July



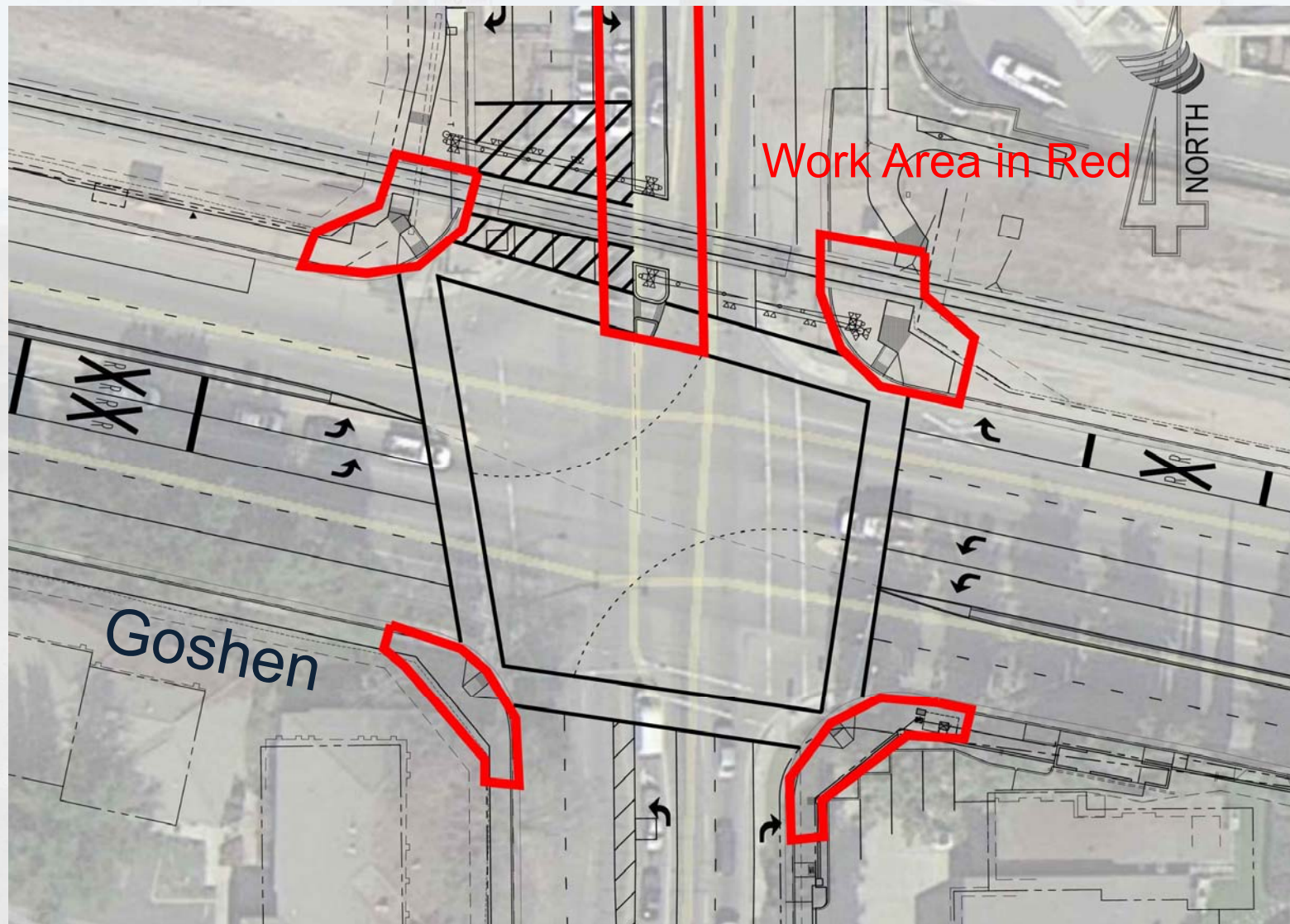
Phase 3 – Median Work: Lane Closures. Northbound Demaree one lane.

Work Hours: M-F 7am-7pm, Late August-Mid September



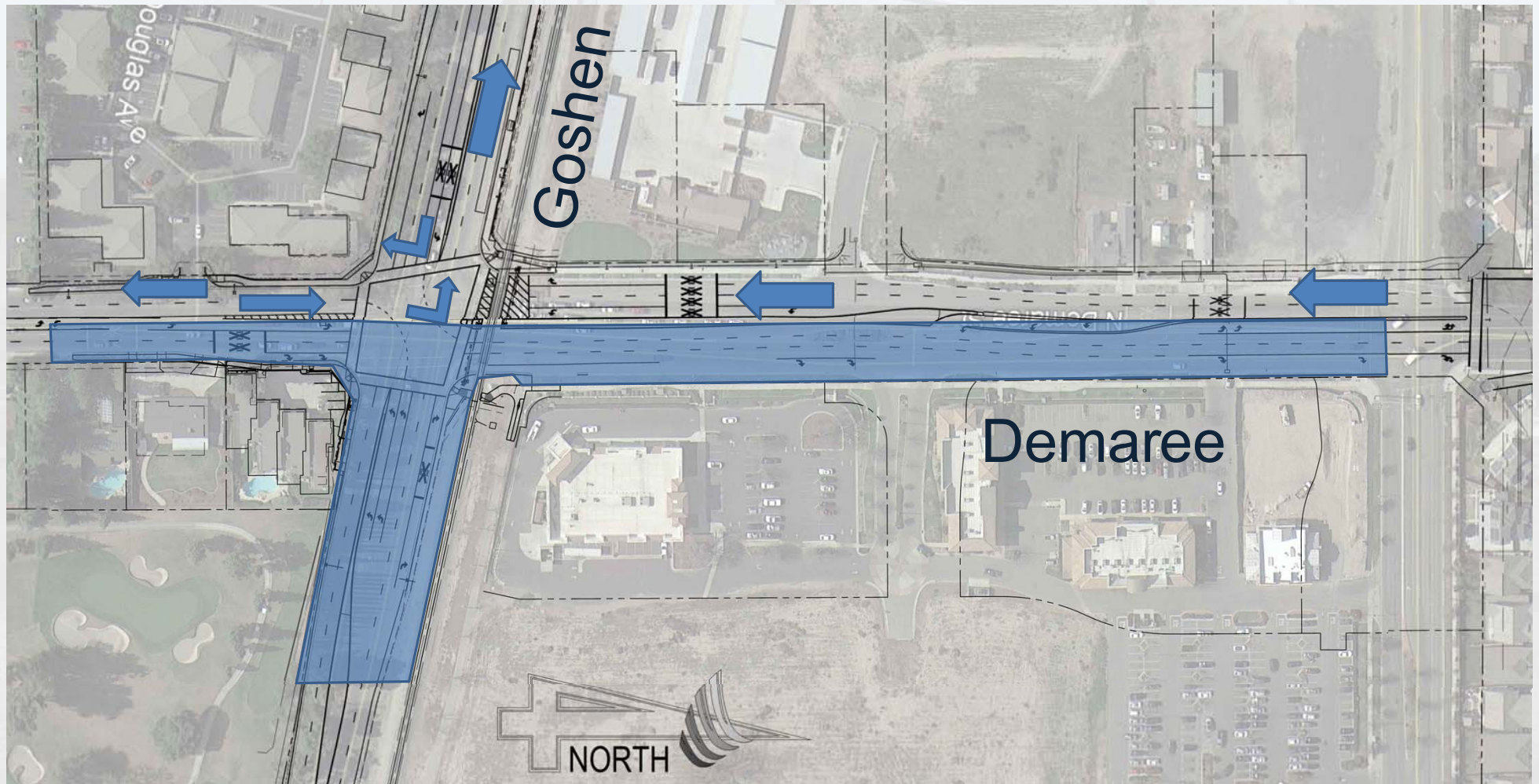
Phase 4 – Corner-Median Work: Lane Closures. Northbound Demaree one lane

Work Hours: M-F 7am-7pm, Mid September-Early October
Demaree



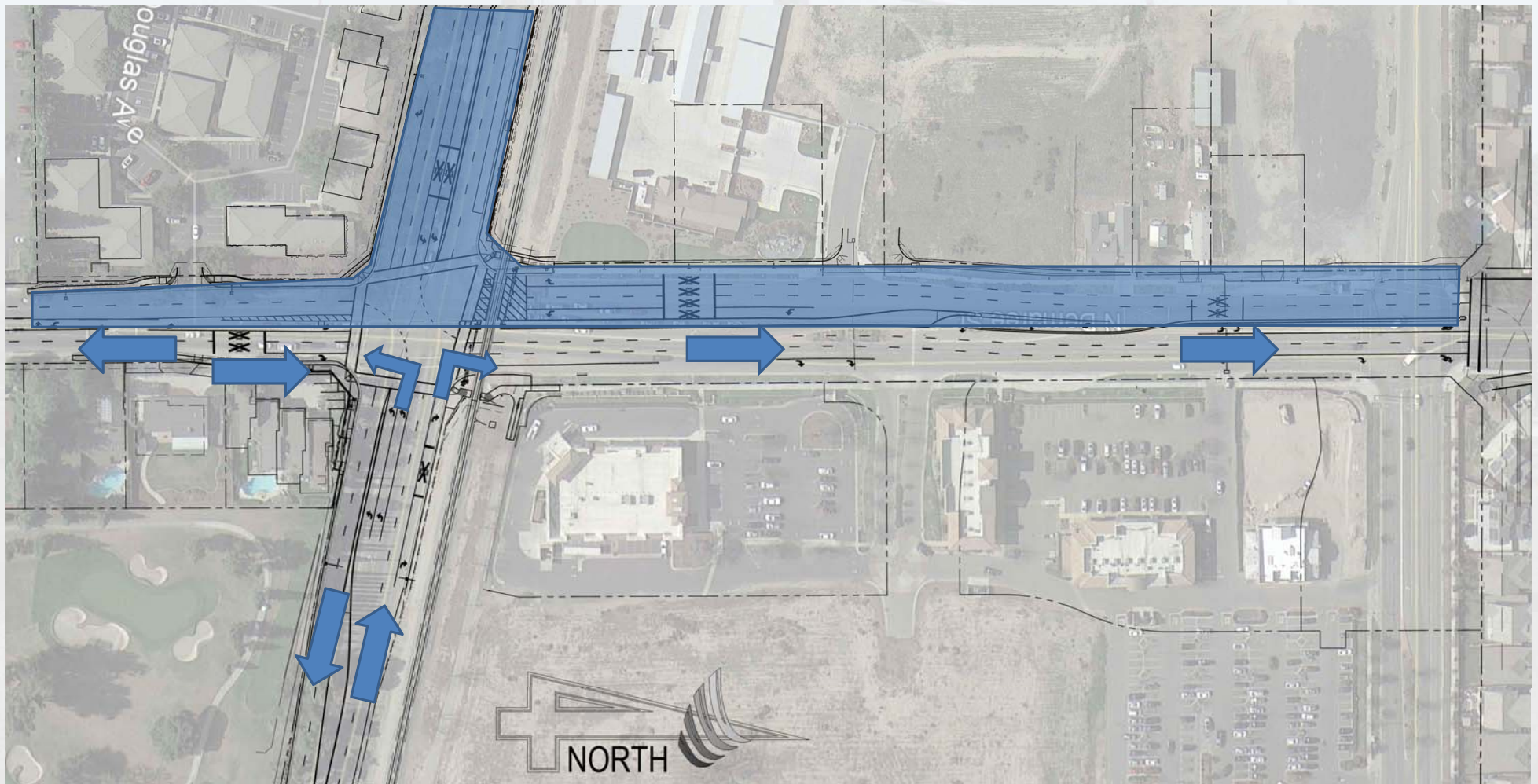
Phase 5 – Street Work: East Side of Demaree and Goshen Closed.

Work Hours: M-F 7am-7pm, Early October-Early November



Phase 6 – Street Work: West Side of Demaree and Goshen Closed.

Work Hours: M-F 7am-7pm, Early November-Mid December

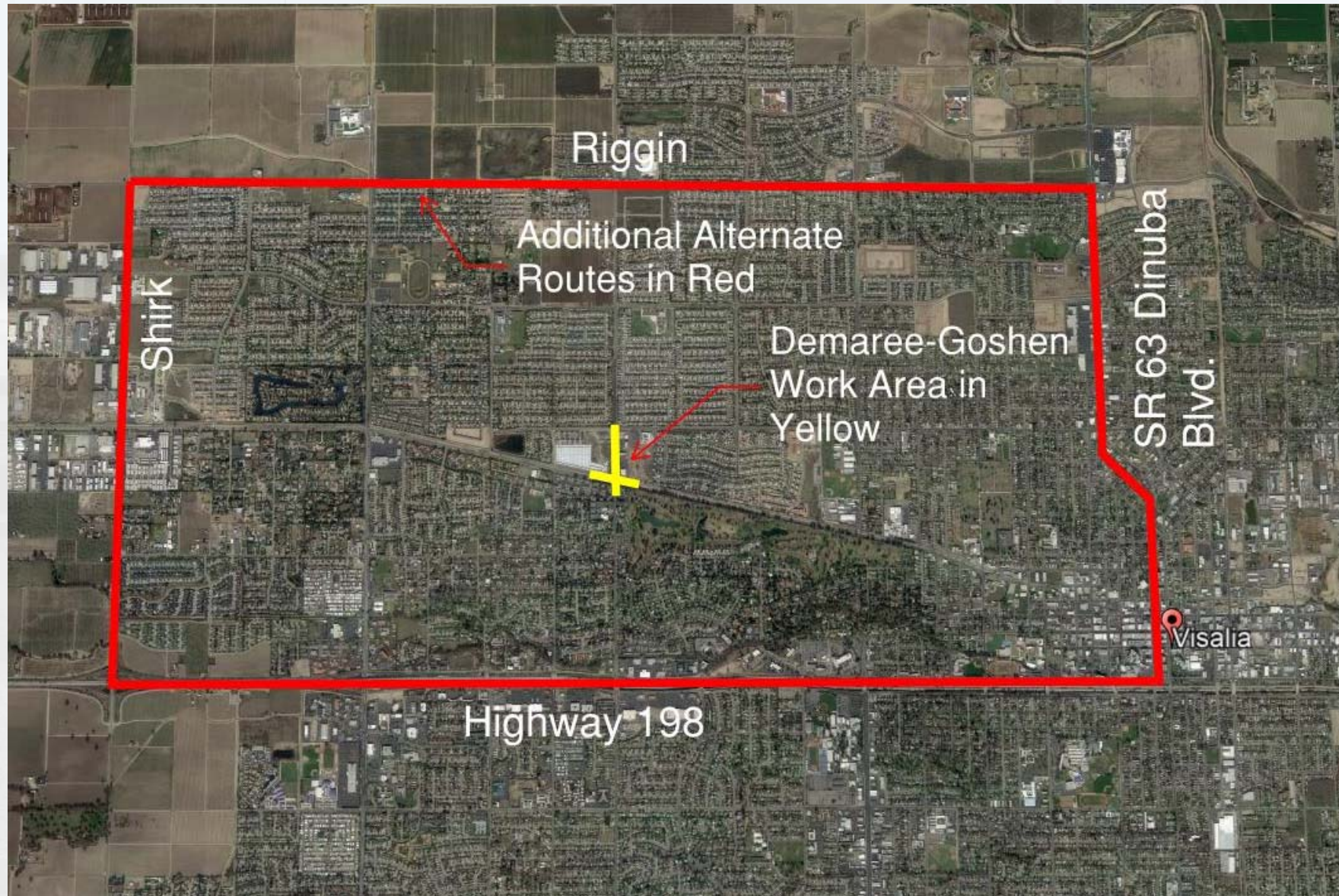


Alternate Routes

Specific Detour Routes will be posted for Each Phase



Additional Alternate Routes



Stay informed
and plan
ahead



TEXT ALERTS

To Sign up for mobile alerts,
text

“goshendemaree”

to

662-200-4303



To stay informed and plan ahead,
follow the project on social media.



@Cityofvisalia



**For more information
and updates, visit us
online**

www.visalia.city/goshendemaree





24-hour
contact during
construction

(559) 718-1546

Questions?

