

NOTES:

1. ALL CURB RETURNS SHALL HAVE SIDEWALK RAMPS PER CITY OF VISALIA CONCRETE STANDARD DRAWINGS.
2. THE CITY ENGINEER MAY REQUEST DIFFERENT DIMENSIONS TO ACCOMMODATE THE CITY'S SPECIAL NEEDS.

ABBREVIATIONS:

B/C = BACK OF CURB

R/W = RIGHT OF WAY

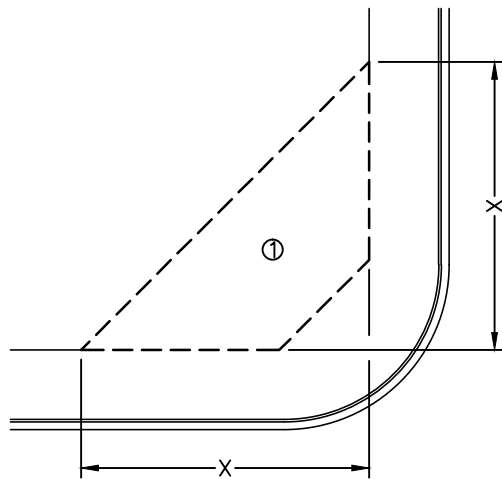
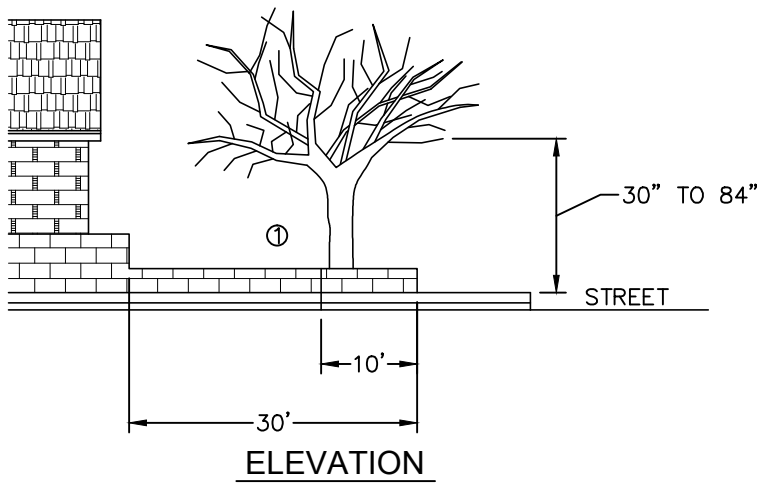
APPROVED BY: 
CITY ENGINEER R.P.E. 81734 DATE 09/16/16

**CITY OF VISALIA
DESIGN & IMPROVEMENT STANDARDS**

CORNER RADII DEDICATIONS

REVISIONS
08/18/16
BK 2016

SD-1



CONSTRUCTION NOTES:

① VERTICAL CLEAR ZONE

ROADWAY TYPE	X
6 LANE ARTERIAL	40'
4 LANE ARTERIAL	40'
4 LANE COLLECTOR	40'
2 LANE COLLECTOR	30'
LOCAL	30'

NOTES:

1. SIGNS, FENCES, WALLS, UTILITY BOXES, STRUCTURES, SHRUBS, HEDGES OR OTHER PLANTS, BUT EXCLUDING TREES OVER 30 INCHES IN HEIGHT SHALL NOT BE PERMITTED WITHIN THE RESTRICTED AREAS EXCEPT AS APPROVED BY CITY ENGINEER.
2. PLANTING WITHIN THE R/W IN THE VERTICAL CLEAR ZONE SHALL BE PER THE APPROVED TYPES AND DIMENSIONS AND SHALL NOT ENCROACH WITHIN THE SIGHT TRIANGLE PER AMERICAN ASSOCIATION OF STATE HIGHWAY AND TRANSPORTATION OFFICIALS (AASHTO) GUIDELINES.
3. TREES ARE PERMITTED WITHIN THE RESTRICTED AREAS PROVIDED:
 - A. NO LIMBS, LEAVES, NEEDLES OR OTHER FOLIAGE ABOVE 30 INCHES OR BELOW 84 INCHES ARE PERMITTED.
 - B. TREES ARE PLANTED SO AS NOT TO OBSTRUCT MORE THAN 20% OF THE VISIBILITY WHEN COMBINED WITH OTHER OBSTRUCTIONS PRESENT.
4. COLLECTOR AND ARTERIAL ROADS SHALL ADHERE TO SIGHT VISIBILITY REQUIREMENTS PER SIGHT DISTANCE REQUIREMENTS STANDARD DRAWING AND SHALL COMPLY WITH AASHTO.

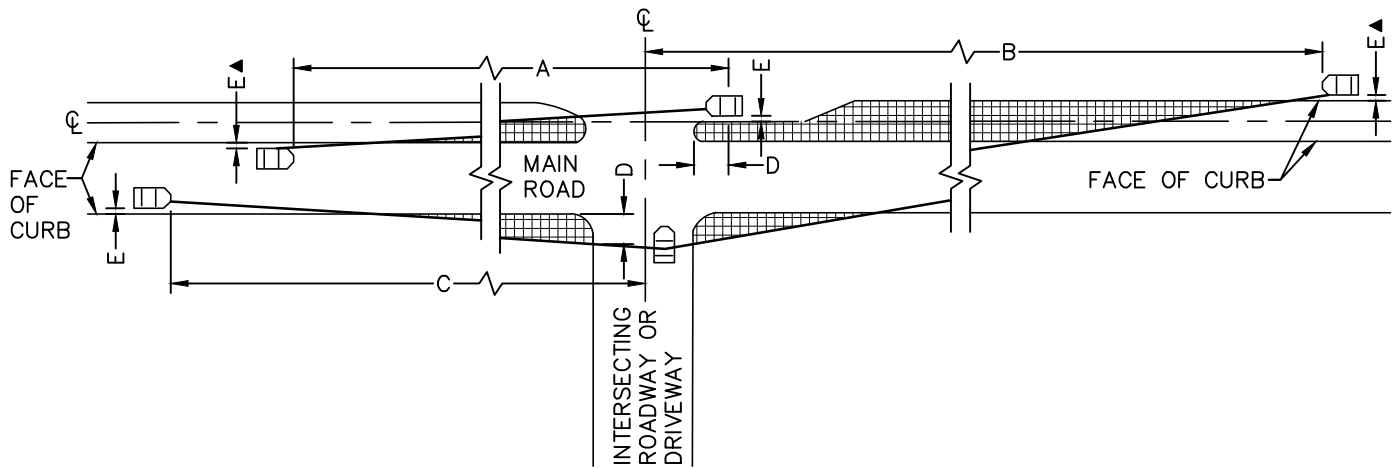
APPROVED BY: 
 CITY ENGINEER R.P.E. 81734 09/16/16
 DATE

CITY OF VISALIA
 DESIGN & IMPROVEMENT STANDARDS

SIGHT VISIBILITY TRIANGLE

REVISIONS
 08/26/16
 BK 2016

SD-2



LEGEND:

- ▲ WHERE NO MEDIAN IS PRESENT USE CENTER OF ROADWAY AS A SUBSTITUTE FOR E

HEIGHT RESTRICTED AREA (SEE NOTE 4)

TABLE A

STREET	A	B*	C**	D	E
COLLECTOR	355'	500'	385'	18'	3'
ARTERIAL	480'	700'	480'	18'	3'

* REDUCE COLUMN "B" BY 165 FEET FOR SIGNALIZED INTERSECTIONS

** DIMENSION "C" IS FOR RIGHT-TURNS AT SIDE STREET APPROACHES PROVIDING ONLY RIGHT-IN/RIGHT-OUT MOVEMENTS. WHERE LEFT TURNS ARE ALLOWED, DIMENSION "C" SHALL EQUAL DIMENSION "B".

NOTES:

1. DIMENSIONS SHOWN IN TABLE "A" SHALL BE VERIFIED BASED ON AASHTO STANDARDS.
2. SIGHT DISTANCE FOR A COLLECTOR ROADWAY IS BASED ON A PASSENGER CAR ON A ROADWAY THAT PROVIDES 2-LANES IN EACH DIRECTION WITH A 14' RAISED MEDIAN, A DESIGN SPEED OF 40 MPH, AND AN APPROACH GRADE OF LESS THAN THREE PERCENT.
3. SIGHT DISTANCE FOR AN ARTERIAL ROADWAY IS BASED ON A PASSENGER CAR ON A ROADWAY THAT PROVIDES 3-LANES IN EACH DIRECTION WITH A 24' RAISED MEDIAN, A DESIGN SPEED OF 50 MPH, AND AN APPROACH GRADE OF LESS THAN THREE PERCENT.
4. NO SIGNS, FENCES, WALLS, UTILITY BOXES, STRUCTURES, SHRUBS, HEDGES, OR OTHER PLANTS, (EXCLUDING TREES), OVER 30 INCHES IN HEIGHT SHALL BE PERMITTED WITHIN THE RESTRICTED AREAS.
5. TREES ARE PERMITTED WITHIN THE RESTRICTED AREAS PROVIDED:
 - A. NO LIMBS, LEAVES NEEDLES OR OTHER FOLIAGE ABOVE 30 INCHES OR BELOW 84 INCHES ARE PERMITTED.
 - B. TREES ARE PLANTED SO AS NOT TO OBSTRUCT 20% OF THE VISIBILITY WHEN COMBINED WITH OTHER OBSTRUCTIONS PRESENT.
6. SIGHT DISTANCE FOR TYPICAL RIGHT ANGLE INTERSECTION ONLY. SKEWED INTERSECTIONS WILL REQUIRE ADDITIONAL DESIGN FOR REVIEW AND APPROVAL FROM CITY ENGINEER.

APPROVED BY: 09/16/16
 CITY ENGINEER R.P.E. 81734 DATE

CITY OF VISALIA
 DESIGN & IMPROVEMENT STANDARDS

**SIGHT DISTANCE REQUIREMENTS
 FOR ARTERIAL & COLLECTOR STREETS**

REVISIONS
 08/26/16
 BK 2016

SD-3