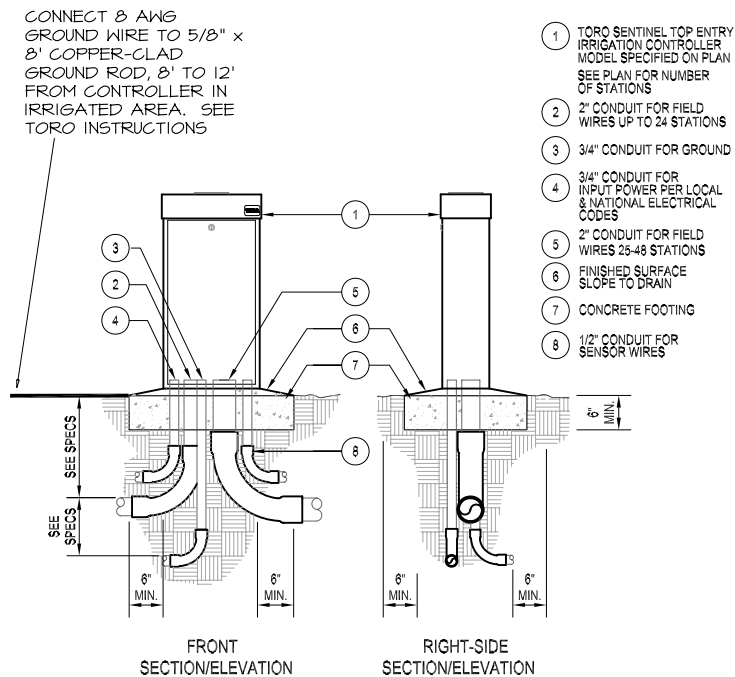


NOTES:

- ① LINE SIZE NORMALLY OPEN MASTER VALVE, 24 VOLT, LOW WATTAGE SOLENOID IN THE VALVE BOX.
- ② DATA INDUSTRIAL FLOW SENSOR MODEL # IR220P IN VALVE BOX. THE WIRE BETWEEN THE CONTROLLER AND FLOW METER SHALL BE UF DIRECT-BURIAL TYPE 14 AWG OR LARGER AND SHALL BE CONTINUOUS WITHOUT ANY SPLICES BETWEEN THESE TWO POINTS. WIRE CONNECTIONS SHALL BE MADE WITH 3M 'SCOTCH-LOC' OR DBY CONNECTORS THAT PROVIDE A WATERPROOF CONNECTION EVEN DURING PROLONGED PERIODS OF IMMERSION.

B FLOW SENSOR/MASTER VALVE



NOTES:

1. INSTALLATION TO BE COMPLETED IN ACCORDANCE WITH MANUFACTURERS SPECIFICATIONS.
2. DO NOT SCALE DRAWINGS.
3. CONTRACTOR TO FURNISH TWO HAND-HELD REMOTES (PART # SHHR) TO CITY OF VISALIA PROJECT MANAGER AT ACCEPTANCE OF PROJECT.

G PEDESTAL MOUNT CONTROLLER