

ESSENTIAL SERVICES  
BALLOT MEASURE  
STREETS

# Streets

GOAL:

- ▣ Good Streets

CONCERN:

- ▣ Inadequate budget to maintain current condition – costs increase with increased deterioration

# **Visalia Street System**

**City Largest Single Asset \$900m**

- **472 road miles**
- **2300 acres of pavement**
- **To optimize pavement maintenance Pavement Management Program (PMP) developed:**
  - **current pavement condition, “Good” to “Fair”**
  - **Current pavement maintenance budget \$2.6/yr - continued deterioration**
  - **\$8.25M needed to maintain current condition**

# Pavement Condition Index (PCI)

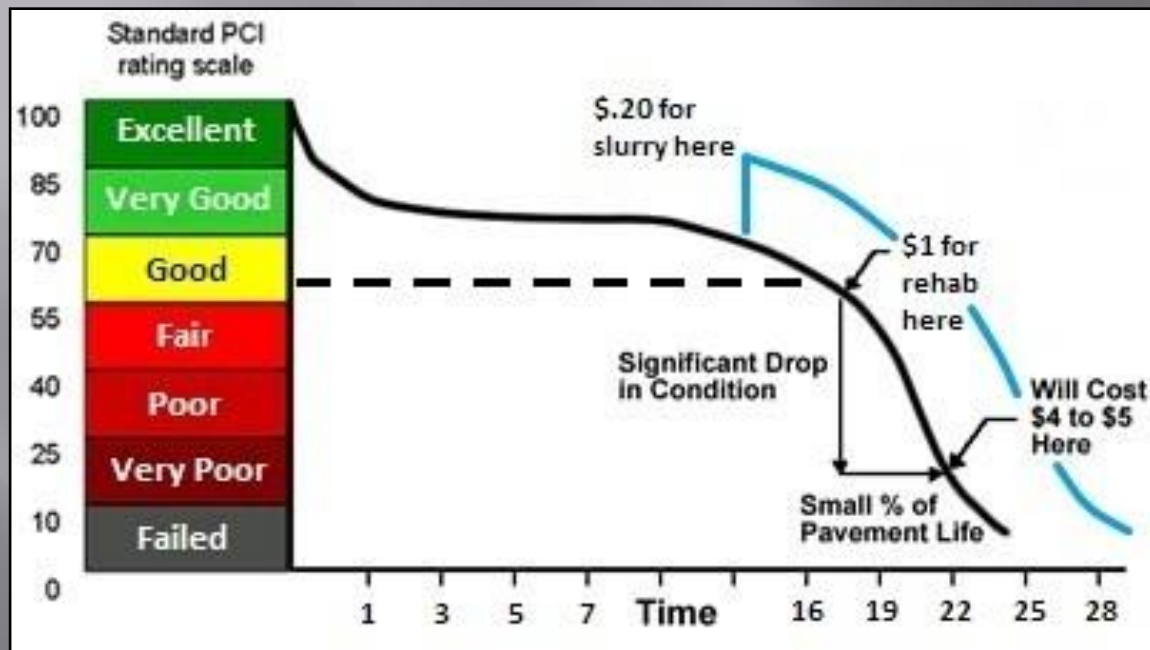
- The PCI is a condition rating that ranges from 0 to 100

- Pavement deteriorated by weather and traffic

- Pavement performance curve shows repair cost

- Lower repair level significantly increases cost

- Maintaining pavements lowers cost





**Johnson-South of Noble**

**GOOD**

**Current Average Pavement Condition  
About \$0.10 to \$0.50 per square foot**

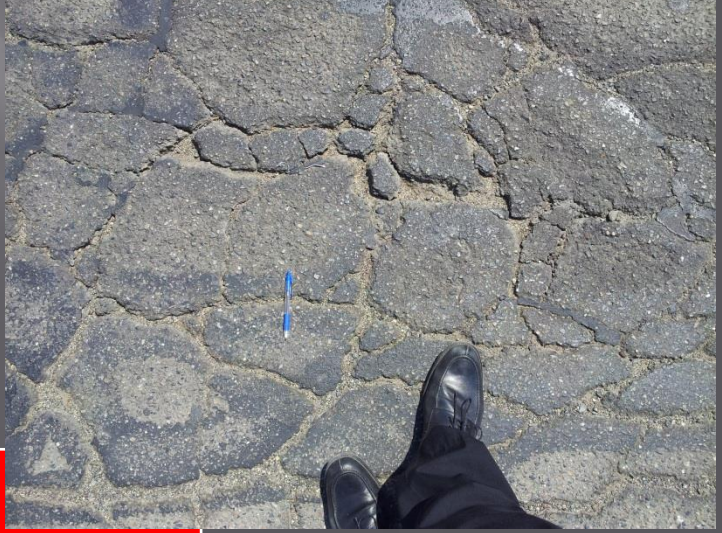


**Floral - Main to Center**

**FAIR**

**Average Condition in 5 Years with current  
maintenance level**

**About \$0.50 to \$1.00 per square foot**



**VERY POOR**

**Average Condition in 25 Years with current maintenance level**  
**About \$3.00 to \$5.00 per square foot**

**Murray-Locust to Court**

**Ben Maddox-Goshen To Center**

# Pavement Maintenance Summary

## All Amounts in Millions

Current Road Budget: \$2.6 Annually

<u>Pavement Condition</u>	<u>No new money, time to reach</u>	<u>Twenty year road condition based upon increased budget and cost to restore to Good.</u>	
		<u>Inc. Budget</u>	<u>Cost to Good</u>
Good	Now	\$ 5.60	\$ -
Fair	2 yrs	\$ 4.00	\$ 9.00
Poor	11 yrs	\$ 2.60	\$ 16.00
Very Poor	22 yrs	\$ -	\$ 23.00